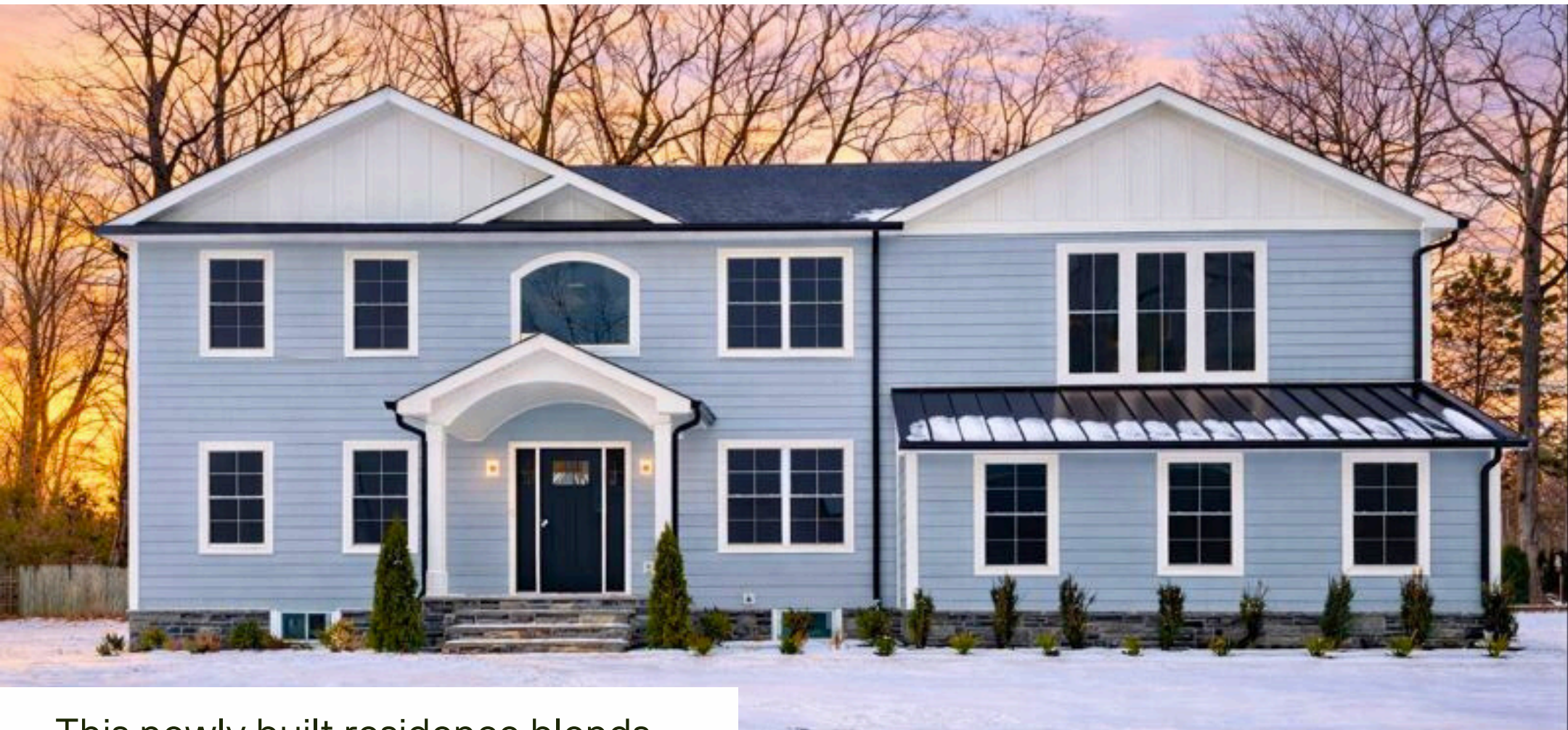


New Construction Home for Sale

📍 181 Maple Ave Berkeley Heights, NJ, 07922



This newly built residence blends timeless design with modern sophistication, offering premium finishes, thoughtful details, and an atmosphere curated to deliver comfort, style, and distinction.



4,867 sq. ft.



5 Bedrooms



6 Bathrooms



2 Car Garage

OFFERED AT:

\$2,300,000

CONTACT



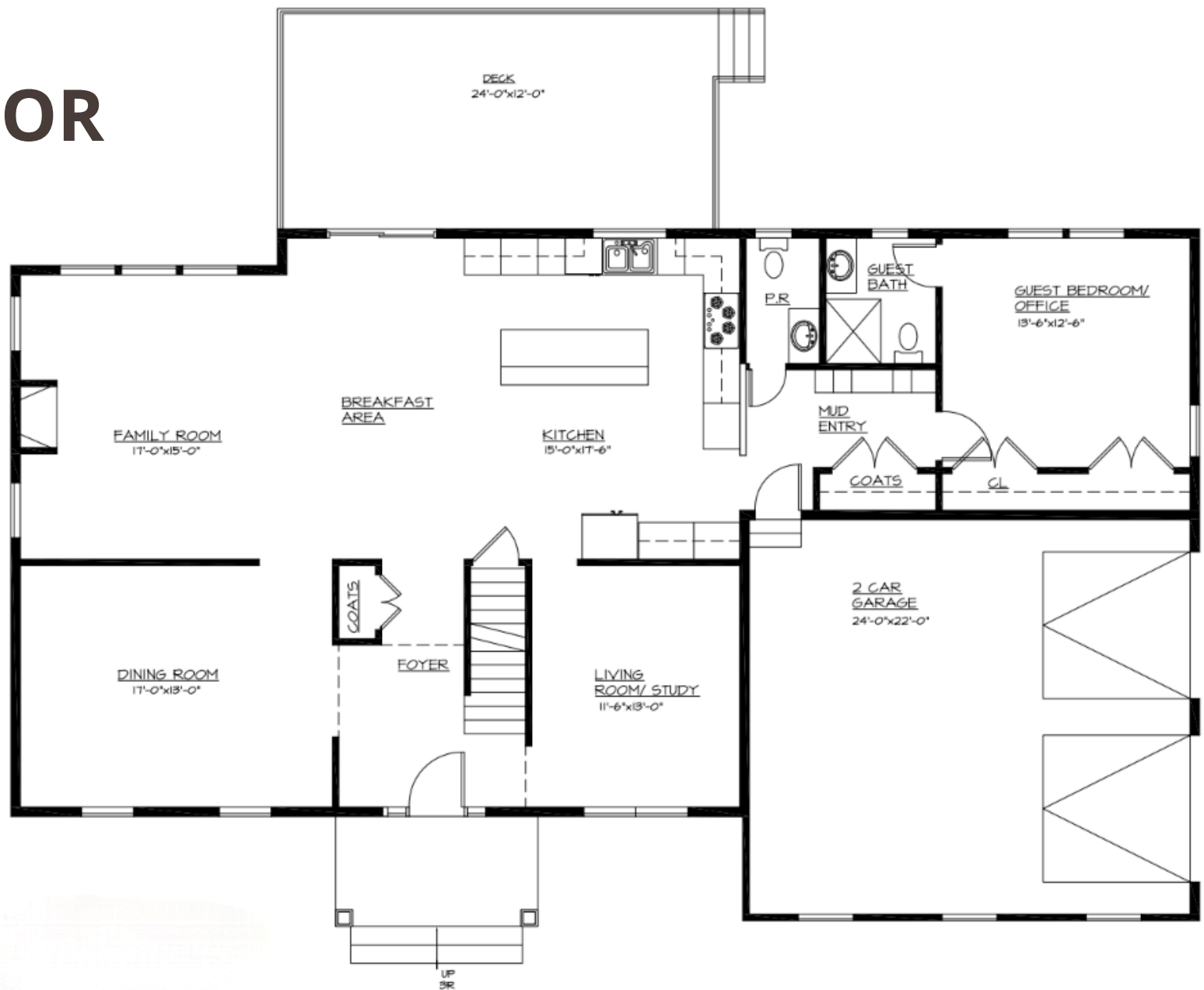
(201) 892 5266

PROPERTY FEATURES

Overview

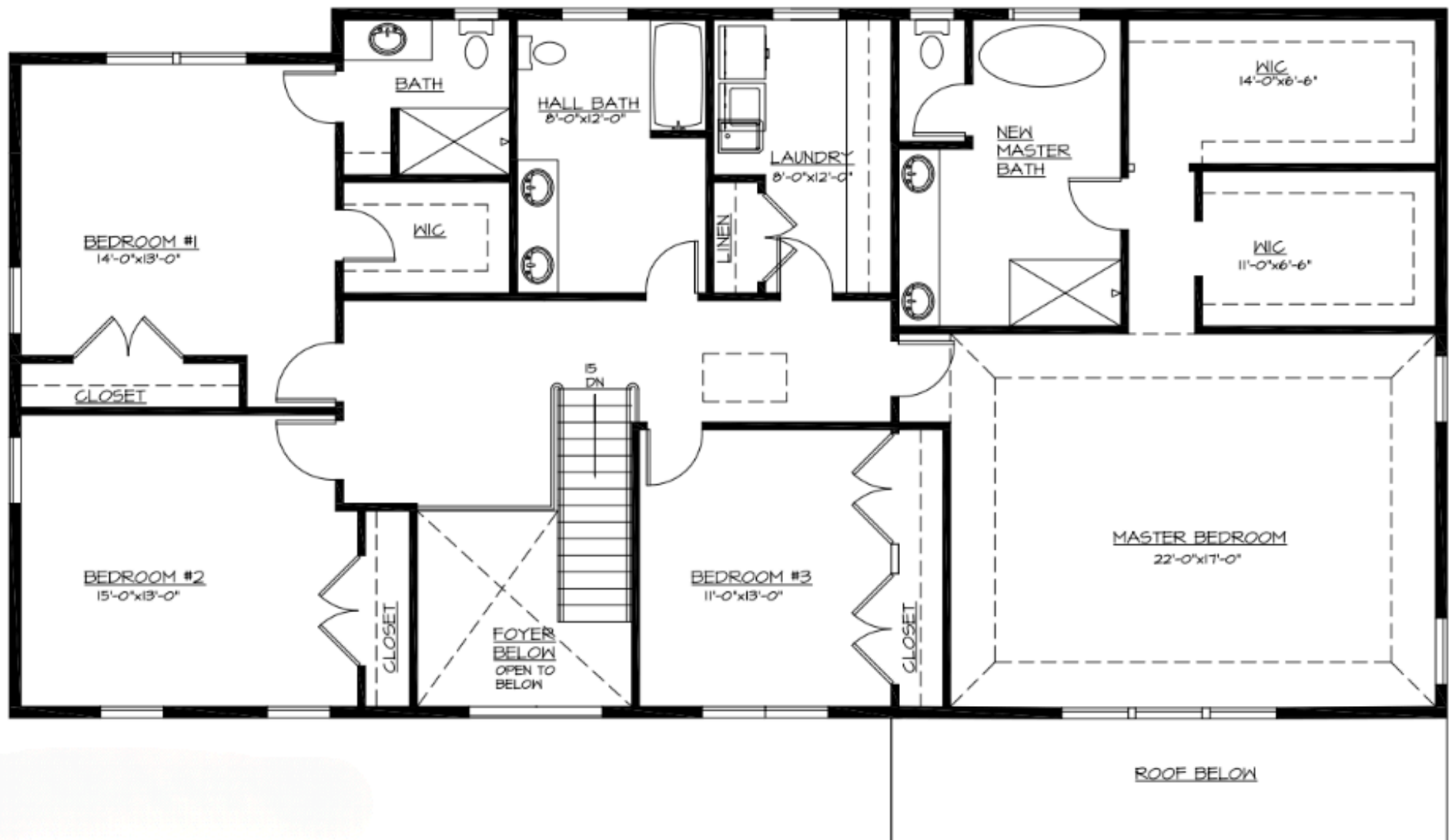
- **Stories:** 2 + *Finished Basement*
- **Bedrooms:** 5
- **Bathrooms:** 4 Full | 2 Half
- **Garage:** 2-Car, Slab-on-Grade
- **Outdoor Area:** Expansive Rear Deck

FIRST FLOOR



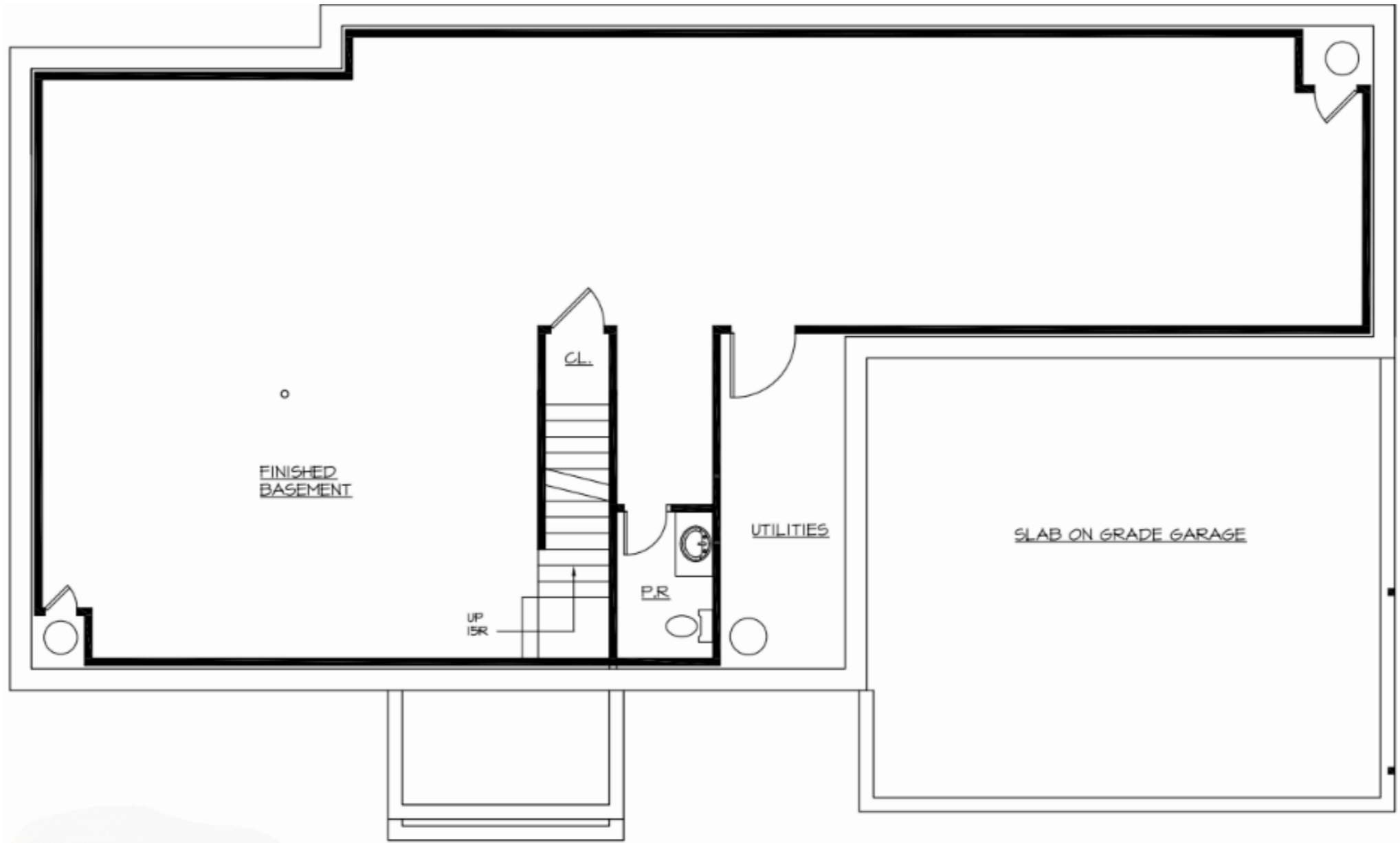
- **Open-Concept Kitchen, Breakfast Area & Family Room**
 - Kitchen features a large center island & premium appliance package
 - Ideal for entertaining & everyday living
- **Formal Dining Room**
 - Perfect for hosting & special occasions
- **Living Room / Study**
 - Flexible space for a home office or quiet den
- **Mudroom Entry**
 - Convenient access from garage with coat storage
- **Guest Bedroom / Office**
 - Private main-level room adjacent to a full guest bath
- **Direct Access to Rear Deck**

SECOND FLOOR



- **Spacious Master Suite**
 - Large bedroom with two walk-in closets
 - Luxurious en-suite bath with soaking tub, walk-in shower, & dual vanities
- **Three Additional Bedrooms**
 - Generous sizes with dedicated closet space
- **Full Hall Bathroom**
 - Conveniently located for secondary bedrooms
- **Second-Floor Laundry Room**
 - Central location for everyday ease
- **Open Foyer Below**

BASEMENT



- **Large Open Recreation Area**
 - Ideal for a home gym, media room, playroom, or additional living space
- **Powder Room**
 - Added convenience for entertaining or extended use
- **Utility Room**
 - Dedicated space for mechanicals and storage

Home Warranty Coverage Included

This home is protected by a comprehensive 2-10 Home Buyers Warranty® (2-10 HBW), **starting from the day of closing.**

Workmanship Warranty

Covers the quality, fit, finish, & materials used in the construction of the home, including:

- Roof covering
- Cabinets & countertops
- Doors & interior trim
- Drywall & paint
- Hardwood floors, ceramic tile & carpet
- Fireplace
- Exterior siding

Distribution Systems Warranty

Protects the essential systems operating behind the walls, including:

- Electrical wiring
- Supply & waste plumbing
- Ductwork

Structural Warranty

Provides coverage for structural defects affecting the home's load-bearing components, including:

- Foundation
- Floor framing
- Roof framing
- Load-bearing walls
- Beams & columns